



W H COLLIER

Handmade Bricks Since 1863

Beauty no machine can match



Every brick is hand-thrown using clay from our own quarry.
The outcome is a sublime blend of mellow colours and individual
textures that no machine can match.

www.whcollier.co.uk

160 years of Brick-making

We are continuing a tradition of brick-making by hand that extends back over 160 years.

Our quarry has provided clay for many notable buildings such as Windsor Castle Training Centre, Pitzhanger Manor, a Gold award-winning M&G Garden at Chelsea, Nandos restaurants, The Mercury Theatre, Colchester as well as many significant private houses across the UK.

A blend of different sands is mixed with clay from our quarry to produce our distinct colours. Each brick is hand thrown into traditional moulds crafted by our mould-maker in sustainably sourced hardwood.

The bricks are dried over a number of weeks before the kiln is set and fired.

Master Brickmakers

Each of our Master brick-makers has a unique throw which means that we can tell who threw each of the bricks we make!





Nando's Colchester

Feature wall using our handmade Antique bricks and a bespoke angled special designed by the architect. Nandos were so pleased they asked us to create bricks for a similar wall for their new restaurant in Rochdale.

Sustainability

The good news about clay bricks

There is no getting away from the fact that it takes a lot of heat to bake a brick but their very long life (average usable life 500 years!) and ease of reuse make them a relatively sustainable building material. Brick structures in the UK are rated A+ by the Building Research Establishments (BRE) Green Guide.

Site of Special Scientific Interest

The clay pit at W H Collier is classed as a Site of Special Scientific Interest (SSSI). This is due to the uniquely important Pleistocene sediments, which have yielded a continuous pollen record through the entire Hoxnian Interglacial period.

Our active quarry forms a very important part of England's geological resource. This is because the quarrying process has exposed vertical sections of clay not normally visible in a natural state.

ISO 14001

Our Environmental Management System is independently inspected annually and re-certified every 3 years to assure that we meet the rigorous environmental standards of ISO 14001:2015. This certification covers both our extraction of clay and our production of clay bricks.

The Dig



Late summer or Autumn offers the optimum time to dig our clay with minimum impact on wildlife. The clay is then weathered-off in our clay stack for a year or more before use.

Our Primrose Range is made up of yellows and buffs.

Primrose



The Making



Our Master Brickmakers blend just the right quantity of water, sand and pigment with the clay. They 'throw' the clay into the mould ensuring it settles properly, skim the base and turn out the brick onto the drying trucks.





Primrose colours

Primula Yellow



College Blend Light



College Blend Mix



Primrose Weathered



Primrose Mild



College Blend Dark





Private home

Using our imperial Primrose bricks, this project won a *BDA Best Craftsmanship Award in 2013. We worked very closely with the owner/builder to produce this beautiful outcome.

*Brick Development Association

Our Anglian Range includes colours with more dominant reds.

Anglian



The Mould-making



Sean, our specialist mould-maker creates moulds from sustainably sourced hardwoods from a local supplier. The moulds can be carved to produce bespoke relief patterns or shapes.

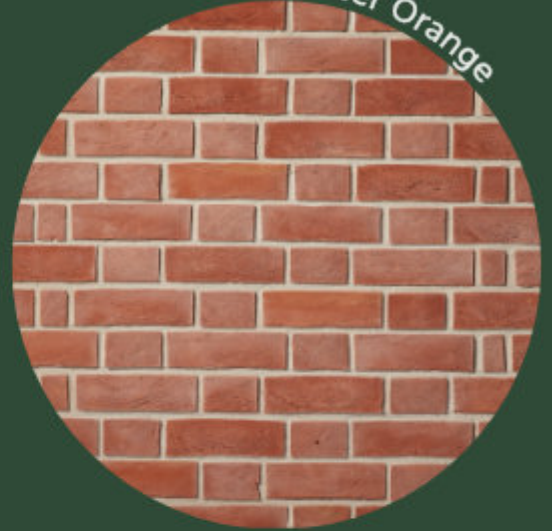


Anglian colours

Antique



Colchester Orange



Georgian Red



Light Red



Light Grey

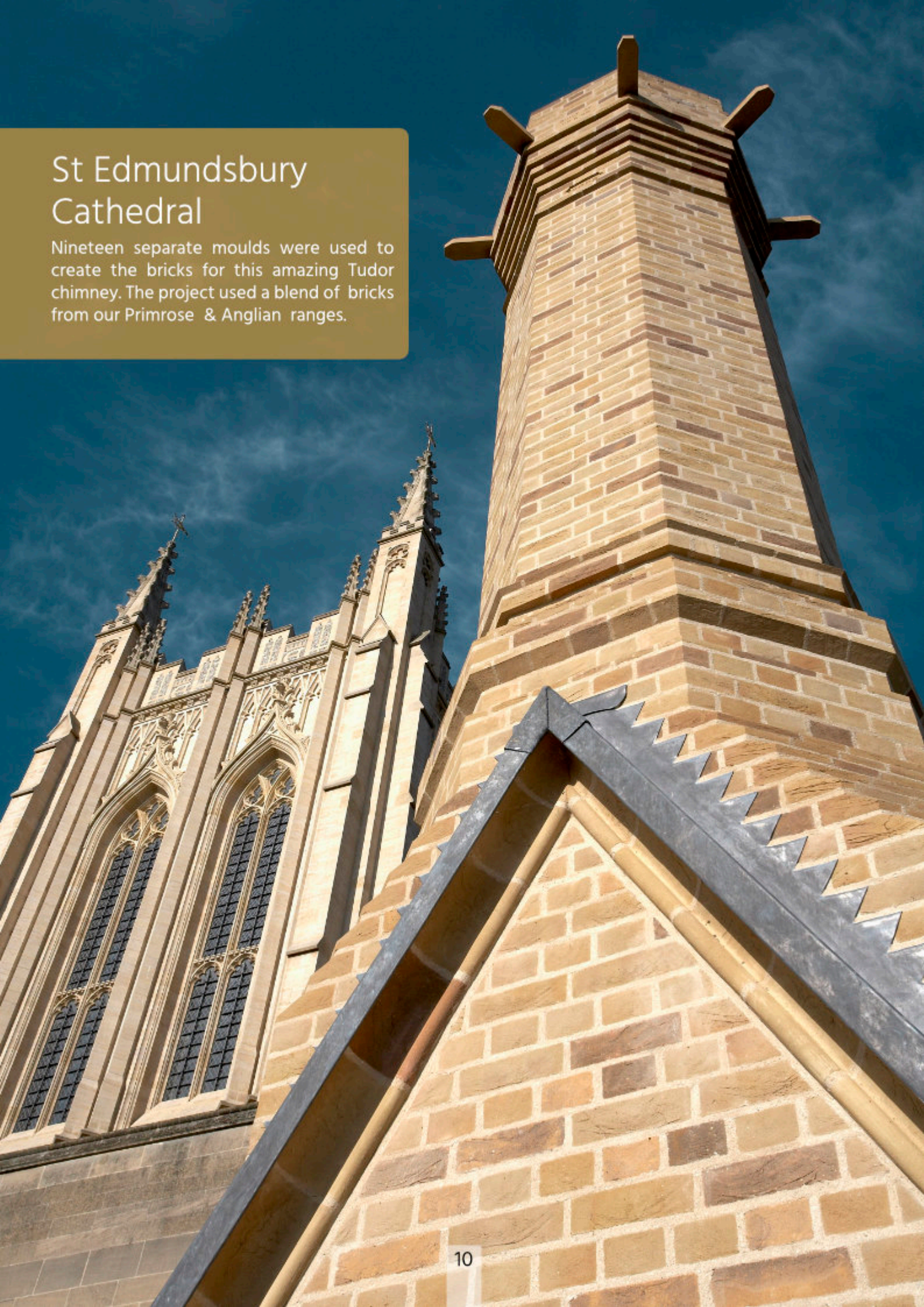


Light Brown



St Edmundsbury Cathedral

Nineteen separate moulds were used to create the bricks for this amazing Tudor chimney. The project used a blend of bricks from our Primrose & Anglian ranges.





STANLEY HALL.

BEN. HOGG

Specials & Bespoke

We not only make British Standard specials but can create moulds to make bricks to your own unique requirements.

We have over 1000 different moulds for making special shapes.

Most specials are made to order so please remember to include all of the specials you need at the time you place your main order. The natural drying process can not be rushed so you may experience delays if you do not do this.

MARTELSHAM CHIMNEY POINT.
HALL.

T. FELIX
WITH WOLD.
5x175x110.
G. RET.

SHAW CRASFORD.

300X300X95.75.

HAR. HUTO'S HEATHERSET T.
OVOLOE ARCH SPRING BLK.

LOMBE-TAYLOR.
STARSTON.

L. 242
W. 250
H. 170.



The Drying



Except in very cold weather, our bricks are dried by natural air flow. They are moved on rails slowly through our long drying shed over a period of up to 8 weeks. If they were not properly dried they would crack in the kiln.



Bespoke saddleback capping brick



Bespoke Tudor Rose cube



Ovolo



Bespoke Air Brick



Bespoke Wide-bed Plinth Internal Return



Bespoke Profiled stretcher



Bespoke profiled plinth return



BSS PL4 Plinth Internal Return



BSS AN2 External Angle



BSS PL3 Plinth Stretcher



Bespoke Pier Capping



Bespoke profiled header



Bespoke external angle



BSS PL2 Plinth Header



Ogee



BSS AN1 Squint



Standard 1" Slip

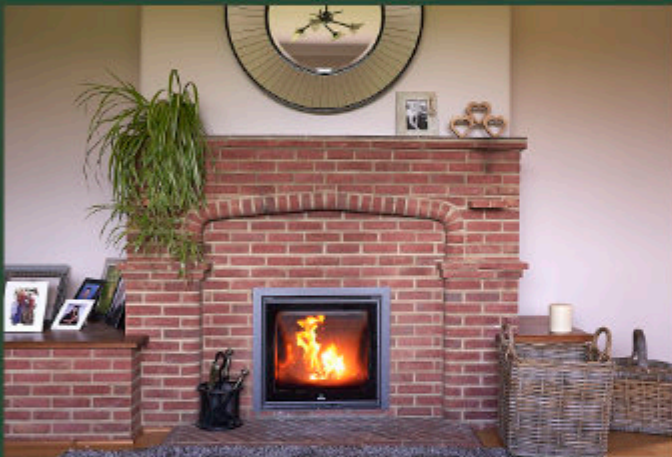


Bespoke Year Plaque

Briquettes

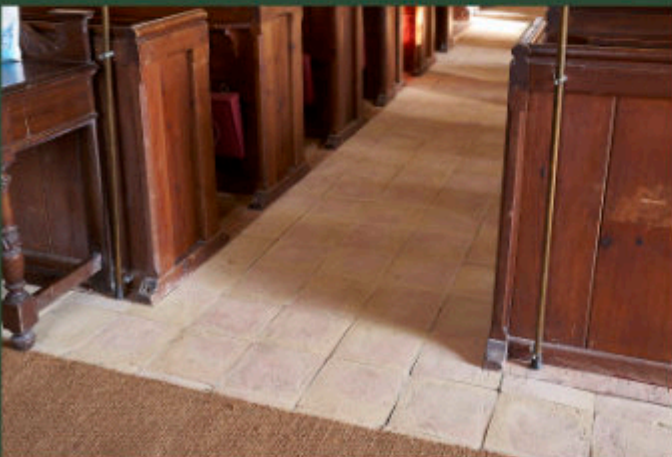
Very few brick-makers in the UK still produce the miniature briquettes used in brick fireplace surrounds.

Our standard fireplace briquettes measure 145 x 66 x 36mm and are available in any of our colours. Talk to us at an early stage to explore what is possible.



Pammets

We make traditional Pammets* in any of our colours. Our standard size is 228mm square x 25mm but they can be made to any size. (*also known as Pamments)



The Firing



Approximately 17,000 bricks are fired in our kiln for 4 or 5 days at temperatures reaching 1,060°C.

Our kiln is of the 'moving hood' design which means that bricks are set out alongside the kiln which, moves on rails to settle over the bricks for the firing.

Specifications

Anglian 65mm brick

Work size 215 x 102.5 x 65
Tolerance Mean T2
Tolerance Range R1
Compressive strength 28.7 N/mm
(minimum)
Water Absorption 17% (maximum)
Soluble salts content S2
Durability designation F2
Quantity per pack 400
Weight per pack 850Kg
Pack Configuration 5 equal blades of 80
with 2 fork voids. Strap banded and
wrapped

Primrose 65mm brick

Work size 215 x 102.5 x 65
Tolerance Mean T2
Tolerance Range R1
Compressive strength 40N/mm
(minimum)
Water Absorption 18% (maximum)
Soluble salts content S2
Durability designation F2
Quantity per pack 400
Weight per pack 850Kg
Pack Configuration 5 equal blades of 80
with 2 fork voids. Strap banded.

Available Sizes

Type – L x W x H

50mm – 215 x 102.5 x 50

65mm – 215 x 102.5 x 65

Imperial – 228 x 110 x 68

Linear – 350 x 110 x 50 (or to your spec.)

Briquette – 146 x 70 x 38

The technical information in this brochure is correct at the date of this edition. W H Collier reserves the right to amend specifications, as materials and manufacturing processes may vary over time.

Whilst the colours and textures in this brochure are as accurately represented as possible, customers are reminded that there is no substitute for making decisions based on an actual samples. Furthermore, as a natural product, the colour and texture of clay bricks can vary from batch to batch.

Edition : July 2023

Choosing W H Collier

Visit us in Marks Tey

We are immensely proud of the brick-making tradition at W H Collier and love to share it with visitors to our yard.

If you are contemplating specifying our bricks in your next project we would love to welcome you here. We can discuss your project, you can view and handle our bricks and see for yourself, 160 years of industrial heritage in action.



Nikki Lax - sales, finance & admin

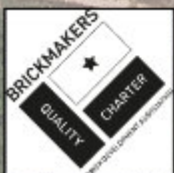
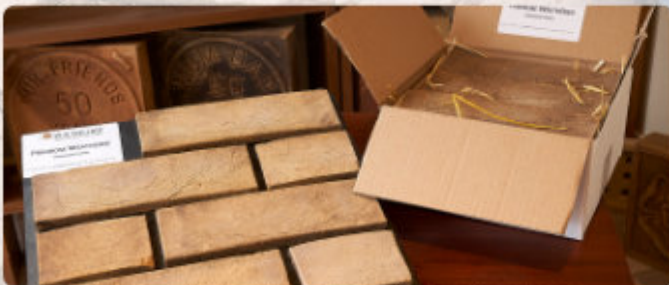
Samples

There is no better way to make your final decision for colour and texture than to view a sample alongside other materials you propose to use.

To request FREE samples use the form on our website www.whcollier.co.uk or call us on 01206 210301.



Mark Strugnell - production & quality control







Beauty no machine can match

W H Collier Ltd
Church Lane
Marks Tey
Colchester
Essex
CO6 1LN

01206 210301
sales@whcollier.co.uk

  @whcollier1863

Your merchant



1 Windsor Dials

A blend of 19,200 Primrose Weathered, College Blend Light and College Blend Dark were used to develop this enormous corporate headquarters within site of Windsor Castle.

www.whcollier.co.uk